

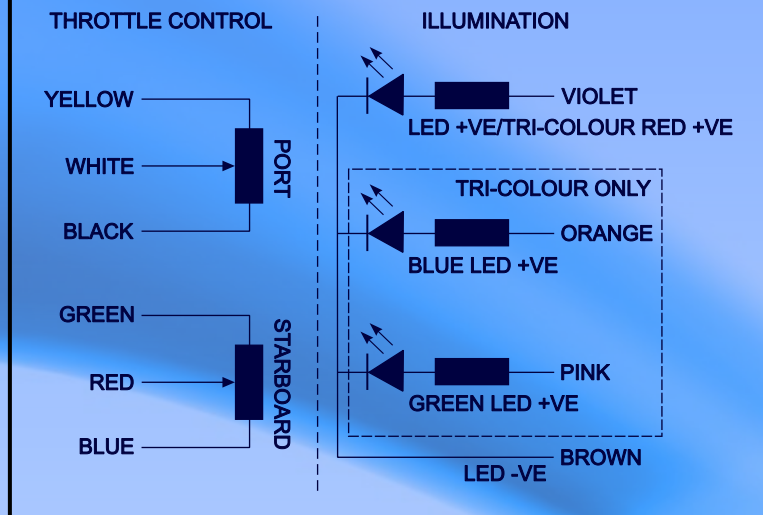
DATASHEET

RADAMEC RCS™
CONTROL SYSTEMS LTD

General Technical Data:

Operating temperature range	-25...+85°C
Protection Class	IP68

Representative Schematic:



Dimensions:

Height	126mm from panel
Width	90mm
Depth	160mm (levers extended)
Mounting Bolts	M4 min. hole depth 5mm
Cable Hole Size	17mm diameter

Wire Colours:

Yellow	Port potentiometer negative
White	Port potentiometer output
Black	Port potentiometer positive
Green	Starboard potentiometer negative
Red	Starboard potentiometer output
Blue	Starboard potentiometer positive
Brown	LED ground
Violet	LED +VE (Red +VE tri-colour)
Orange	Blue LED +VE (Tri-colour only)
Pink	Green LED +VE (Tri-colour only)

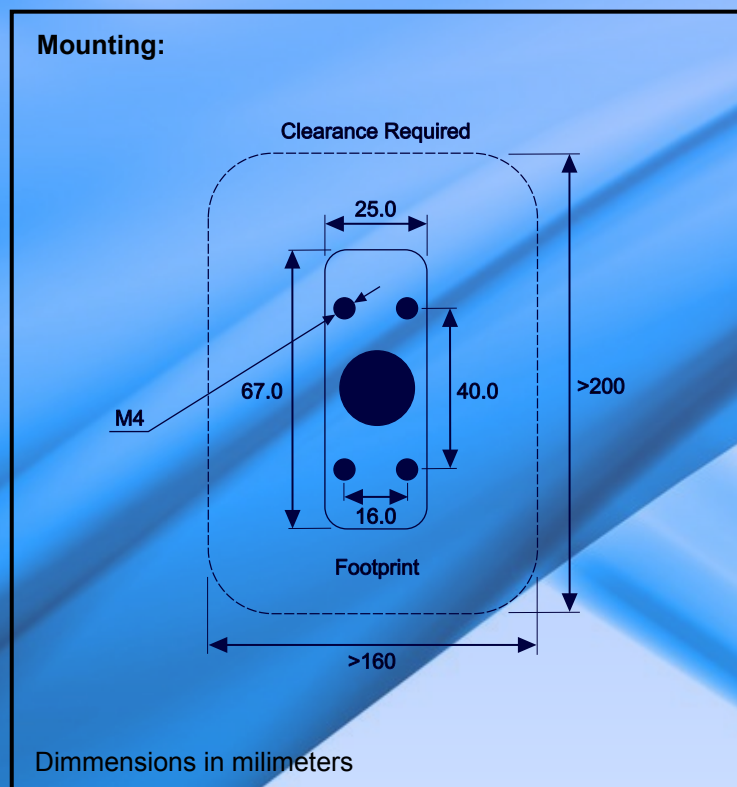
Illumination Electrical Characteristics:

Operating Voltage Range	12-30V
Maximum Current	30mA (single colour) 100mA (tri-colour)
Maximum Power Dissipation	720mW (single colour) 2.4W (tri-colour)
Available Illumination Colours	Red, Green, Blue, Tri-colour

Throttle Control Technical Data:

Maximum Operating Voltage	24V
Maximum Current	2.4mA
Maximum Power Dissipation	57.6mW
Impedance	10KOhms \pm 20%
Minimum Operation Cycles	2 Million

Mounting:



Part Numbers: AG6641WP - AAA - BB - CC

Lever Style

TLB = Twin Lever Black Knobs
TLS = Twin Lever Silver Knobs
SLS = Single Lever Silver Handle
SLB = Single Lever Black Handle

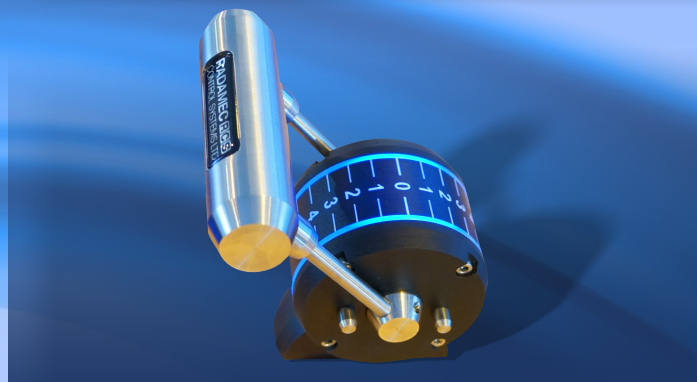
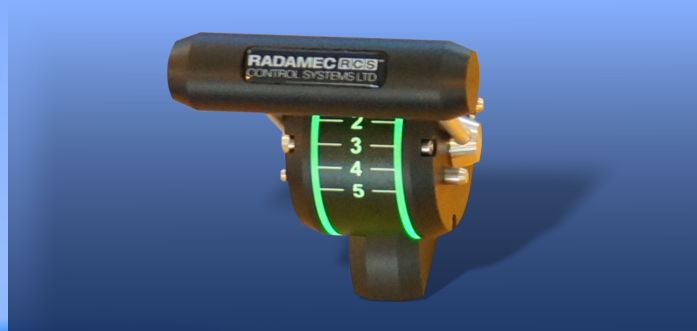
Legend Style

01 = Single 5 - 0 - 5
02 = Double 5 - 0 - 5
03 = Left 5 - 0 - 5, Right 0 - 10
04 = Left 0 - 10, Right 5 - 0 - 5
05 = Left 0 - 10, Right 5 - 0 - 5 with Green & Red Triangle
06 = Single 0 - 10

Illumination

NI = Not illuminated
RD = Red
GR = Green
BL = Blue
TR = Tricolour (RGB)

AG6641 TWIN OR SINGLE LEVER COMPACT CONTROL HEAD



The AG6641 control head has been designed to meet the extremes of on deck applications and is fully sealed to IP68. With a maximum width of only 65mm, the compact head is ideally suited to areas where space is a premium, ideal for mounting on arm rests, consoles or at the helm.

Dual detents provide a positive feel and smooth catch free operation whilst also providing the constant friction that ensures the lever stays set. Customised scales can be easily accommodated. To provide a rugged quality finish the body is manufactured from glass filled nylon 66, well suited to the rigours of salt water, wide temperature variations and resists UV attack.

Whilst best known for their use on the RNLI's Tamar class lifeboats they are equally at home on the bridges of Superyachts such as SY Twizzle. They are available with or without illumination to suit your application.

