

TACHOMETER SYSTEMS

RADAMEC RCS™
CONTROL SYSTEMS LTD

www.radamec-controls.co.uk

TACHOMETER SYSTEMS

Tachometer systems use non-contact proximity switches to sense speed and direction of engine and propeller shafts. They generate a voltage or current proportional to the shaft speed.

The simple Non-reversing Tachometer (AG6130) requires only a single proximity sensor for non-contact measurement of shaft speed.

The Reversing Tachometer (AG6131) uses two proximity sensors to enable the additional feature of directional sense along with non-contact measurement of shaft speed.

FEATURES

- Non-contact measurement.
- No servicing.
- Simple installation for new vessels or retro-fit.
- Housed in IP65 rated enclosure.
- Two independent, calibrated outputs.

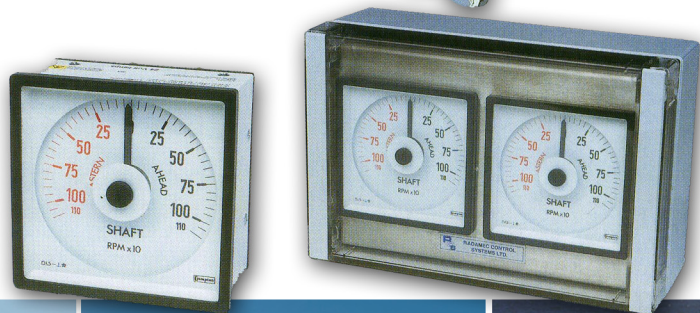
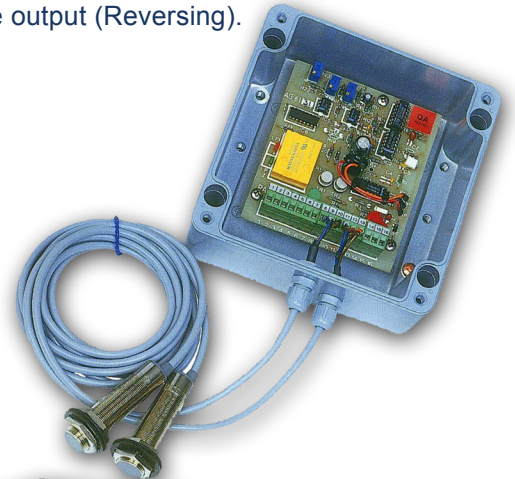
AVAILABLE SIGNAL INTERFACES

0-20mA Current output (Non-Reversing).

0-4V Voltage output (Non-Reversing).

20-0-20mA Current output (Reversing).

4-0-4V Voltage output (Reversing).



RADAMEC CONTROL SYSTEMS LIMITED

Euro House, Abex Road, Newbury, Berkshire RG14 5EY UK

t: +44 (0)1635 405 28 **f:** +44(0) 1635 474 53 **e:** sales@radamec-controls.co.uk **w:** www.radamec-controls.co.uk